
БЛОКИ УПРАВЛЕНИЯ

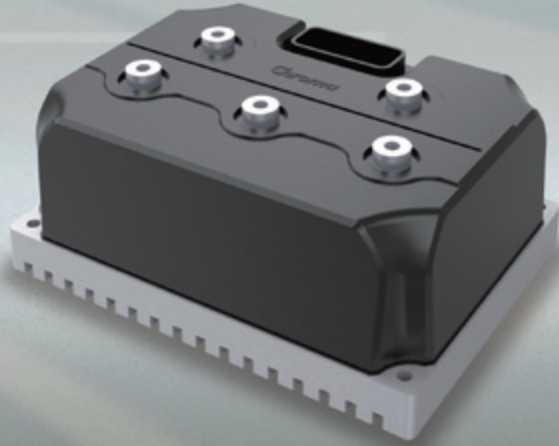
CR 05-4831, 07-4850, 08-7231, 12-7255, 10-9631, 18-9655

ТЕХНИЧЕСКИЕ ХАРАКТЕРИСТИКИ

По вопросам продаж и поддержки обращайтесь:

Архангельск (8182)63-90-72	Калининград (4012)72-03-81	Новосибирск (383)227-86-73	Сочи (862)225-72-31
Астана +7(7172)727-132	Калуга (4842)92-23-67	Омск (3812) 21-46-40	Ставрополь (8652)20-65-13
Астрахань (8512) 99-46-04	Кемерово (3842)65-04-62	Орел (4862)44-53-42	Сургут (3462) 77-98-35
Барнаул (3852) 73-04-60	Киров (8332)68-02-04	Оренбург (3532)37-68-04	Тверь (4822)63-31-35
Белгород (4722)40-23-64	Краснодар (861)203-40-90	Пенза (8412)22-31-16	Томск (3822)98-41-53
Брянск (4832)59-03-52	Красноярск (391)204-63-61	Пермь (342)205-81-47	Тула (4872)74-02-29
Владивосток (423)249-28-31	Курск (4712)77-13-04	Ростов-на-Дону (863)308-18-15	Тюмень (3452)66-21-18
Волгоград (844)278-03-48	Липецк (4742)52-20-81	Рязань (4912)46-61-64	Ульяновск (8422)24-23-59
Вологда (8172)26-41-59	Магнитогорск (3519)55-03-13	Самара (846)206-03-16	Уфа (347)229-48-12
Воронеж (473)204-51-73	Москва (495)268-04-70	Санкт-Петербург (812)309-46-40	Хабаровск (4212) 92-98-04
Екатеринбург (343)384-55-89	Мурманск (8152)59-64-93	Саратов (845)249-38-78	Челябинск (351)202-03-61
Иваново (4932)77-34-06	Набережные Челны (8552)20-53-41	Севастополь (8692) 22-31-93	Череповец (8202)49-02-64
Ижевск (3412)26-03-58	Нижний Новгород (831)429-08-12	Симферополь (3652) 67-13-56	Ярославль (4852)69-52-93
Казань (843)206-01-48	Новокузнецк (3843)20-46-81	Смоленск (4812)29-41-54	

сайт: chrn.nt-rt.ru || эл. почта: cmr@nt-rt.ru



MOTOR CONTROLLER CR SERIES FOR LOW VOLTAGE EV APPLICATION

CR Series is designed for low voltage, 48~96V, motor applications. It can drive various types of motors, including induction motor (IM), permanent magnet (PM) motor, and BLDC motor, to meet different system integration requirements. SMARTuning software enables precise and quick learning with the motor to increase the speed and maximize the optimization during drivetrain system integration.

CR Series features a comprehensive allocation of multi-function I/O pins for use with analog inputs, digital inputs, contactor coil drivers and proportional valve drivers. Field Orientation

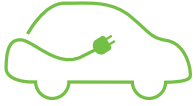
vector Control (FOC) algorithm provides the maximum torque and efficient control during the application. Flexible CAN-bus 2.0b interface connection allows communication with other CAN-bus enabled devices. CR Series is also compatible with other CAN-view tools.

The compact size of controller makes it easy for system integration, and its robust design enables the motor controller to sustain in the harshest operating environment. CR Series motor controllers are also designed with most reliability to ensure the safety of the vehicle.

MODEL CR Series

KEY FEATURES

- Applicable for IM, PM, and BLDC motor
- SMARTuning motor control algorithm
- MTPA (Maximum torque per Amp.) function for extra torque
- High power density & efficiency
- Compact size for easy installation
- Genius System Integrated Controller
 - CR features a comprehensive allocation of multi-function I/O pins for use with analog inputs, digital inputs, contactor coil drivers and proportional valve drivers
- Field Orientation vector Control (FOC) algorithm provides the maximum torque and efficiency control during the application
- Flexible CANbus 2.0B interface connection allows communication with other CAN-bus enabled devices. CR series is compatible with other CAN-view tools or by further customized configuration
- SMARTuning software enables precise and quick learning of the AC motor. CR Series controllers are fully compatible with any brand of AC motor



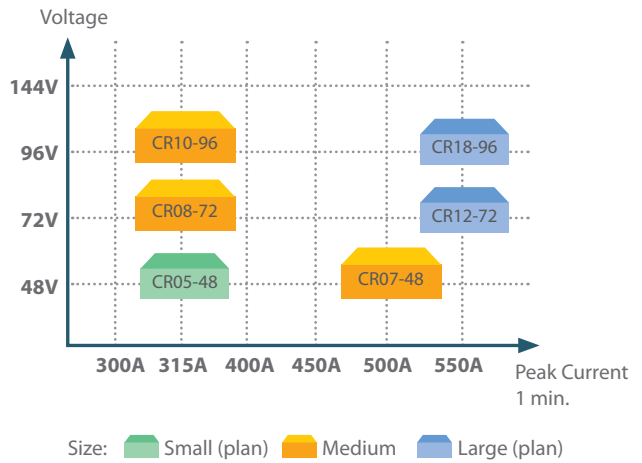
Motor Controller



CR Series

CR SERIES CONTROLLER PRODUCT LINE

(Maximum power by voltage type and size)



SPECIFICATIONS

Model	CR05-4831	CR07-4850	CR08-7231	CR12-7255	CR10-9631	CR18-9655
Battery Voltage	35~60V		55~90V		70~120V	
Nominal Voltage	48V	48V	72V	72V	96V	96V
Rating Current ,Arms	125A	180A	125A	200A	125A	220A
Rating power	5kW	7kW	7.5kW	12kW	10kW	18kW
Peak Current, 2min	315A	500A	315A	550A	315A	550A
Peak power	12kW	20kW	19kW	33kW	24kW	45kW
Dimension, LxWxH (mm)	212x155x75	232x165x85	232x165x85	232x272x85	232x165x85	232x272x85
Max. Efficiency	>95%					
Operating Temperature	-40~70°C (50~70°C with de-rating)					
Storage Temperature	-40~85°C					
Position detection	1. Digital Hall, 2. Encoder, 3. Resolver (Option)					
IP	65					
Cooling	Natural Cooling					
Communication	CAN 2.0B					
Protection	1. OTP (Mosfet/Air), 2. UVP/ OVP (O:Over, U:Under), 3. OCP					

По вопросам продаж и поддержки обращайтесь:

Архангельск (8182)63-90-72	Калининград (4012)72-03-81	Новосибирск (383)227-86-73	Сочи (862)225-72-31
Астана +7(7172)727-132	Калуга (4842)92-23-67	Омск (3812) 21-46-40	Ставрополь (8652)20-65-13
Астрахань (8512) 99-46-04	Кемерово (3842)65-04-62	Орел (4862)44-53-42	Сургут (3462) 77-98-35
Барнаул (3852) 73-04-60	Киров (8332)68-02-04	Оренбург (3532)37-68-04	Тверь (4822)63-31-35
Белгород (4722)40-23-64	Краснодар (861)203-40-90	Пенза (8412)22-31-16	Томск (3822)98-41-53
Брянск (4832)59-03-52	Красноярск (391)204-63-61	Пермь (342)205-81-47	Тула (4872)74-02-29
Владивосток (423)249-28-31	Курск (4712)77-13-04	Ростов-на-Дону (863)308-18-15	Тюмень (3452)66-21-18
Волгоград (844)278-03-48	Липецк (4742)52-20-81	Рязань (4912)46-61-64	Ульяновск (8422)24-23-59
Вологда (8172)26-41-59	Магнитогорск (3519)55-03-13	Самара (846)206-03-16	Уфа (347)229-48-12
Воронеж (473)204-51-73	Москва (495)268-04-70	Санкт-Петербург (812)309-46-40	Хабаровск (4212) 92-98-04
Екатеринбург (343)384-55-89	Мурманск (8152)59-64-93	Саратов (845)249-38-78	Челябинск (351)202-03-61
Иваново (4932)77-34-06	Набережные Челны (8552)20-53-41	Севастополь (8692) 22-31-93	Череповец (8202)49-02-64
Ижевск (3412)26-03-58	Нижний Новгород (831)429-08-12	Симферополь (3652) 67-13-56	Ярославль (4852)69-52-93
Казань (843)206-01-48	Новокузнецк (3843)20-46-81	Смоленск (4812)29-41-54	

сайт: chrn.nt-rt.ru || эл. почта: cmr@nt-rt.ru